

色谱柱: SinoChrom ODS-BP (4.6*250mm, 5 μm)

流动相: A-0.01%三氟乙酸水, B-乙腈

0min 95%A+5%B

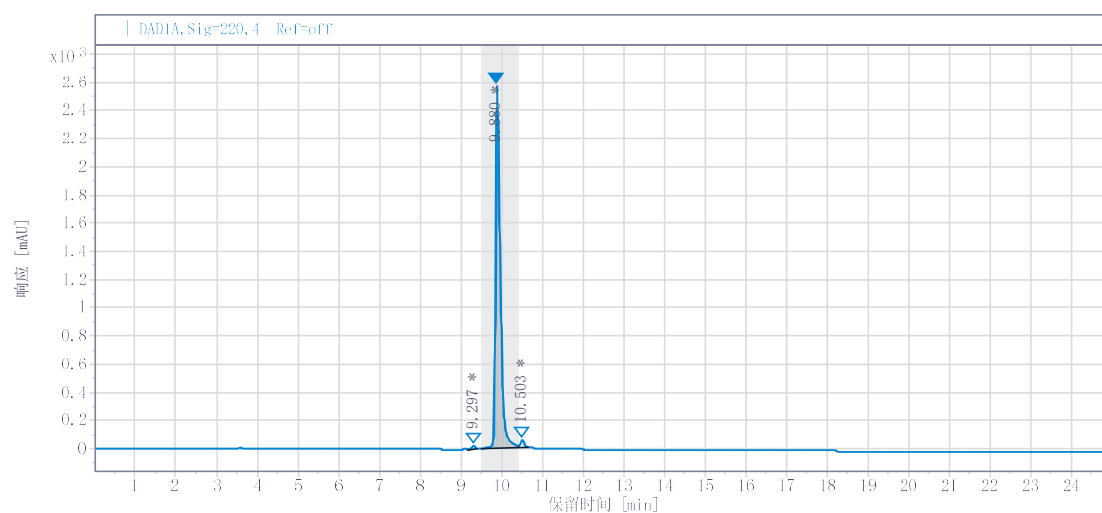
25min 5%A+95%B

流速: 1.0 ml/min

柱温: 25°C

检测器: DAD 260nm

溶剂: 水



#	RT (min)	峰面积	峰面积 %	峰高
1	9.297	127.651	0.614	24.760
2	9.880	20294.410	97.563	2573.600
3	10.503	379.317	1.824	59.498

