

色谱柱: SinoChrom ODS-BP (4.6\*250mm, 5 μ m)

流动相: A-0.1%磷酸水, B-乙腈

0min 95%A+5%B

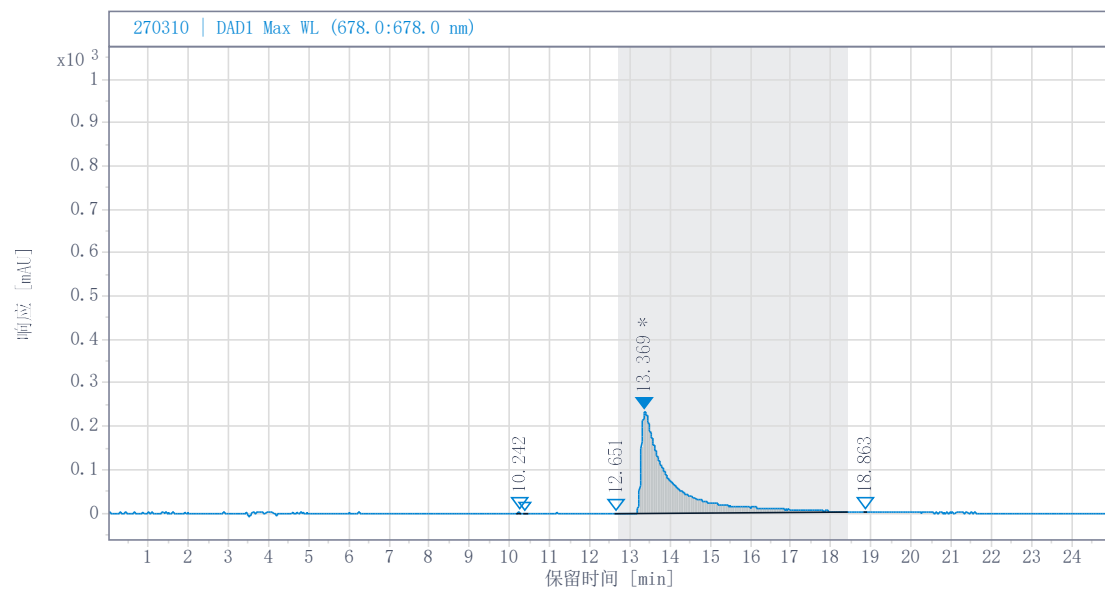
25 min 5%A+95%B

流速:1.0 ml/min

柱温: 30°C

检测器: DAD 222nm

溶剂: 甲醇



#	RT (min)	峰面积	峰面积 %	峰高
1	10.242	9.810	0.089	2.212
2	10.397	10.731	0.098	1.815
3	12.651	7.544	0.069	1.796
4	13.369	10964.701	99.682	234.194
5	18.863	6.921	0.063	1.724