

色谱柱: SinoChrom ODS-BP (4.6*250mm, 5 μ m)

流动相: A-0.1%磷酸水, B-乙腈

0min 45%A+55%B

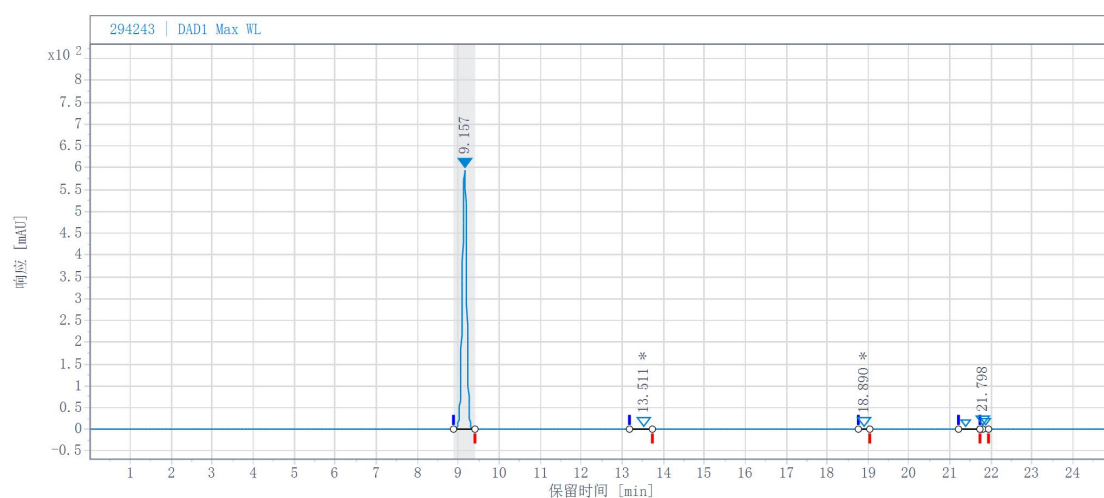
25min 5%A+95%B

流速:1.0 ml/min

柱温: 30℃

检测器: DAD 232nm

溶剂: 甲醇



#	RT (min)	峰面积	峰面积 %	峰高
1	9.157	4584.072	98.934	595.997
2	13.511	20.940	0.452	1.837
3	18.890	1.953	0.042	0.626
4	21.369	8.982	0.194	0.949
5	21.798	4.549	0.098	1.821
6	21.851	12.973	0.280	1.974

